

Velvet

Manuel Vivian

Collection of ceiling and suspended lamps. The cone-shaped lampshade is covered with a flame-retardant. Available in several colours and sizes.

sound absorbing product

COLOURS



ice white

ivory white



blue



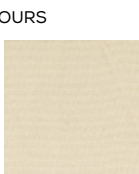
brown



black



white



warm white

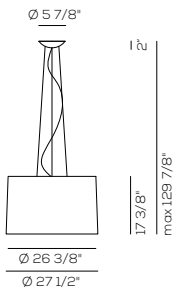
RADIAL DIFFUSER COLOURS





Other colors available upon request.

US VEL 070

lb 14.33 ft3 16.95



VELVET / diffuser INCLUDED

Type	Article	Colours (lampshade)	Colour (Radial diffuser)	Source
US	VEL 070 LED	BC ice white	BC white	LED** E26 1 X 13W - included 120 Vac - CRI 80 diffused beam - 2700K 1600 lm - 123 lm/W 
	VEL 070 E26	BA ivory white	BW warm white	E26 E26 1 X Max 16W LED - 120 Vac LED bulbs not included 
		BL blue		
		MA brown		
		NE black		



example composition code US VEL070 LED BC BC

\*\* In case of temporary out of stock, a version with the following features will be available  
GU24 1 X 15W LED - 120 Vac - CRI 80 - diffused beam - 2700K - 1600 lm

Equivalent Sound Absorption Area (A) in m² per lamp

FREQUENCY	125 HZ	250 HZ	500 HZ	1000 HZ	2000 HZ	4000 HZ	8000 HZ	125-8000 HZ	500-2000 HZ
A	0,15	0,44	0,51	0,66	0,73	0,75	1,01	0,61	0,63

CUSTOMER

NOTES

US VEL 070

NOTICE: Luminous flux (lm) and efficacy (lm/W) for all LED luminaires is estimated based on nominal ratings of the LED sources. Technical data could be subject to alteration without notice. Axo Light does not provide legal guarantee for the accuracy of this data sheet.